

A modified damage index probability imaging algorithm based on delay-and-sum imaging for synthesizing time-reversed Lamb waves

Qingwei Xia¹, Yanyan Liu², Yu Lu³, Shuhao Cao⁴, Hanfei Zhang⁵, Shiwei Ma⁶

Shanghai University, Shanghai, China

⁶Corresponding author

E-mail: ¹mail604111916@gmail.com, ²yyliu2014@shu.edu.cn, ³lu920829@163.com, ⁴shucsh@163.com, ⁵zhanghanfei2006@163.com, ⁶masw@shu.edu.cn

Received 1 February 2019; received in revised form 2 June 2019; accepted 12 June 2019
DOI <https://doi.org/10.21595/jve.2019.20568>



Copyright © 2019 Qingwei Xia, et al. This is an open access article distributed under the Creative Commons Attribution License, which permits unrestricted use, distribution, and reproduction in any medium, provided the original work is properly cited.

Abstract. Imaging for damage in plate structure by Lamb waves is one of the most effective methods in the field of structural health monitoring. In order to improve the accuracy of damage localization, a novel method is proposed to modify damage exponent probability imaging algorithm based on delay-and-sum imaging by using time reversal Lamb waves. A new probability distribution function is introduced to improve the damage index probability method and is combined with delay-and-sum method for damage localization. Experimental results on aluminum plate show that the hybrid algorithm achieves better accuracy of damage location and imaging quality than the conventional delay-and-sum method.

Keywords: damage probability, improved distribution function, time reversal, delay-and-sum.

1. Introduction

Structural health monitoring (SHM) has been an important research field in material integrity nondestructive testing (NDT). As a special ultrasonic wave, Lamb wave has been widely used in the health monitoring of thin plate or shell structure in recent years because of its long propagation distance and low energy attenuation. When the Lamb wave propagates through the defect of the structure, the scattering phenomenon occurs. The damage can be regarded as a secondary source, and the scattered signal propagates in all directions, which pass through the defect again and form a larger echo [1-3].

Time reversal based on the principle of acoustic reciprocity can focus energy in space and time, through which the position of sound source can be obtained, and the signal of sound source can be reconstructed. Ing and Fink [4] compensate the dispersion of Lamb wave automatically by time reversal method. The experiments show the spatial and temporal focusing characteristics of Lamb wave. Wang et al. [5] synthesizes time reversal and synthetic aperture techniques for damage image in structures.

Damage Index (DI) is proposed to characterize changes caused by structural damage and identify the existence of the damage. Wang D et al. [6] proposes a probabilistic imaging algorithm for damage index based on sensor network. Wang et al. [5] proposes a delay-and-sum (DAS) algorithm which effectively images the received signals but results in artifacts for multiple defects. Sohn et al. [2] studies the relationship between the damage condition and the consistency of shape of the source and the reconstructed signal and uses the damage index to characterize the damage degree. Hay et al. [7] proposes a reconstruction algorithm for probabilistic inspection of damage (RAPID), which is a probability-based damage imaging method.

In this paper, we propose a modified damage index probability imaging algorithm based on delay-and-sum imaging algorithm by synthesizing time-reversed Lamb waves. A new probability distribution is investigated to better describe the probability of defect occurrence. The validity of the new algorithm is verified by experiments and the damage location is accurately displayed.

2. Principle of time reversal method

Time reversal means that the receiver receives a signal transmitted by the sound source in time domain, and then transmits the signal from the corresponding receiving sensor, that is, first to the second, and then to the first. By focusing energy in space and time, the position of sound source can be obtained and the reconstruction of signal from sound source can be realized.

We refine the above process. First, the electrical signal is converted to mechanical strain through the transmitter, where other factors are ignored, and only piezoelectric conversion is considered [8]:

$$\varepsilon(\omega) = k_a(\omega) \cdot V(\omega), \quad (1)$$

where ω is angular frequency, $k_a(\omega)$ is electro-mechanical efficiency coefficient, $V(\omega)$ is driving voltage, and $\varepsilon(\omega)$ is mechanical strain. The Lamb waves generated by the mechanical strain propagates in the medium, and the signals received at the receiver are as follows:

$$V_B(\omega) = k_s(\omega) \cdot G(\omega) \cdot \varepsilon(\omega) = k_s(\omega) \cdot G(\omega) \cdot k_a(\omega) \cdot V(\omega), \quad (2)$$

where $k_s(\omega)$ is mechanical-electro efficiency coefficient and $G(\omega)$ is a transfer function. The time reversal of the signal $V_B(\omega)$ is equivalent to the complex conjugation $V_B^*(\omega)$ in frequency domain. Then the signal that reverses the time is transmitted from the receiver, at which point the signal received at the transmitter is the refactoring signal:

$$\begin{aligned} V_R(\omega) &= k_s(\omega) \cdot G(\omega) \cdot k_a(\omega) \cdot V_B^*(\omega) \\ &= k_s(\omega) \cdot G(\omega) \cdot k_a(\omega) \cdot k_s^*(\omega) \cdot G^*(\omega) \cdot k_a^*(\omega) \cdot V^*(\omega) \\ &= T(\omega) \cdot K(\omega) \cdot K^*(\omega) \cdot V^*(\omega), \end{aligned} \quad (3)$$

where $G(\omega)$ is the same transfer function as in Eq. (2) based on the reciprocity of elastodynamics [9]. For simplification, let $(\omega) = G(\omega) \cdot G^*(\omega)$ and $K(\omega) = k_a(\omega) \cdot k_s(\omega)$.

For thin plate without defects, $G(\omega)$ is a constant, so the reconstructed signal is similar to the original signal. For the case of thin plate with defect, $G(\omega)$ is nonlinear, and the frequency dispersion occurs, so the reconstructed signal is distorted compared with the excitation signal after the final time reversal [10], as shown in Fig. 1. In this paper, the reconstructed signals are normalized and enveloped.

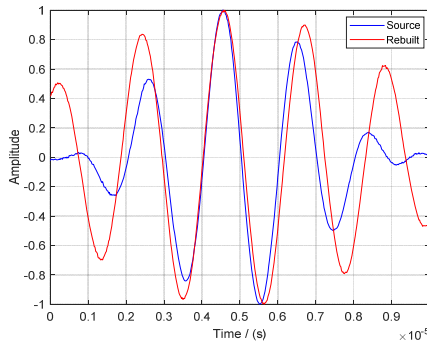


Fig. 1. Reconstruction signal dispersion

3. Proposed method

3.1. Delay-and-sum imaging

The delay and sum imaging algorithm is a combination of elliptic imaging algorithm and time

reversal theory. The position of damage is the intersection of multiple ellipses as shown in Fig. 2. In detection region with damage, the time of the point $X(x, y)$ can be calculated by Eq. (4):

$$t(x, y) = \frac{\|S_0X\| + \|S_iX\|}{c_g}, \tag{4}$$

where S_0 is the transmitting sensor, S_i is the i th receiving sensor, and c_g is Lamb wave group velocity. $\|S_0X\|$ is the distance from S_0 to $X(x, y)$. $\|S_iX\|$ is the distance from S_i to $X(x, y)$. The pixel value of point $X(x, y)$ can be calculated by Eq. (5) for a known time reversal of the reconstruction signal:

$$I(x, y) = \sum_{i=1}^N A_i \cdot f_i(t_s + t(x, y)), \tag{5}$$

where $I(x, y)$ is the damage imaging value of the position $X(x, y)$, N is the number of the signals, A_i is a coefficient for balancing the transducers' output, $t(x, y)$ is the time from point $X(x, y)$ to a set of transmitter-receive pairs, f_i is the reconstruction signal, and t_s is delay time.

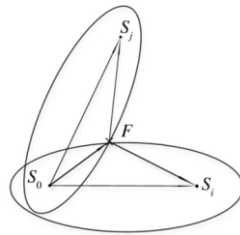


Fig. 2. Delay-and-sum imaging method

3.2. Improved damage index probability imaging

According to time reversal method, the damage index of a sensing path can be defined as the similarity between the reconstructed signal from this transmitting - receiving pair and the original excitation signal. There are several methods to calculate the damage index of a sensing path, and in this paper the classical method [11] is used. The damage index reflects the influence of defect on the sensing path, as follows:

$$DI_i = 1 - \frac{\sqrt{\left[\int_{t_0}^{t_1} V(t)V_B(t)dt \right]^2}}{\sqrt{\int_{t_0}^{t_1} V^2(t)dt \int_{t_0}^{t_1} V_B^2(t)dt}}, \tag{6}$$

where i denotes the i th damage sensing path, t_0 and t_1 are the signal start time and the end time, respectively. The probability of defect occurrence at a certain point can be reconstructed from a DI_i mapped probability distribution function. For N sensing paths in detection region, the damage probability of each pixel $X(x, y)$ can be expressed as Eq. (7):

$$P(x, y) = \sum_{i=1}^N p_i(x, y) = \sum_{i=1}^N DI_i W_i[R_i(x, y)], \tag{7}$$

where $P(x, y)$ is the defect probability at position (x, y) within detection region, $p_i(x, y)$ is the estimation from the i th sensing path, and $W_i[R_i(x, y)]$ is the probability distribution function. In this paper, the distribution function is improved on the basis of the study of Sheen et al. [11]. The relative distance between the transmitter-receiver pair $R_i(x, y)$ is defined as:

$$R_i(x, y) = \frac{1}{\left(\frac{d_{Ai}(x, y) + d_{Ri}(x, y)}{d_i}\right)^m} \quad (8)$$

where d_{Ai} is the distance from $X(x, y)$ to the transmitter in the i th sensing path. Similarly, d_{Ri} is the distance to the receiver. d_i is the distance from the transmitter to receiver. m is an index of distribution decline rate which determines the decreasing rate of damage index in elliptical distribution. By controlling the descent rate of the distribution function, the corresponding distribution boundary is controlled by Eq. (9):

$$W_i[R_i(x, y)] = \begin{cases} \frac{R_i(x, y)}{\beta} - 1, & R_i(x, y) \geq \beta, \\ 0, & R_i(x, y) < \beta, \end{cases} \quad (9)$$

where β is a shape parameter of a certain sensing path, which determines the distribution boundary. The best distribution function in DAS weighted damage probability index algorithm is explored for the optimum combination of m and β .

3.3. Improved DAS weighted damage probability imaging

In DAS method, damage is located at where the amplitude of ellipse is maximum. Therefore, the distribution function of damage probability is further improved. According to Eq. (5) and Eq. (9), the improved distribution function is expressed as Eq. (10):

$$D_i(x, y) = f_i(t_s + t(x, y)) \cdot W_i[R_i(x, y)]. \quad (10)$$

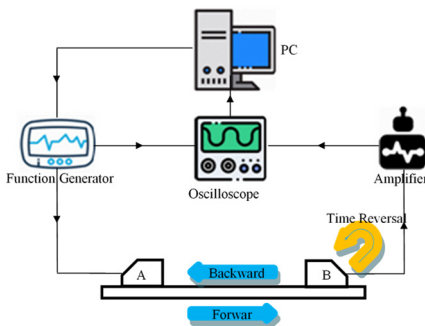
So the overall image by the proposed algorithm is as follows:

$$I(x, y) = \sum_{i=1}^N DI_i \cdot D_i(x, y) = \sum_{i=1}^N DI_i \cdot \{f_i(t_s + t(x, y)) \cdot W_i[R_i(x, y)]\}. \quad (11)$$

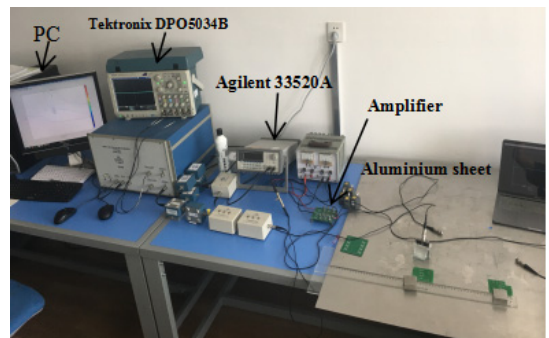
4. Experiment and results

4.1. Experimental setup

Experimental instrument consists of a host computer, an arbitrary waveform signal generator (Agilent 33520A), an independently designed active signal amplifier (based on the TI op amp chip OPA657), and a 4-channel oscilloscope (Tektronix DPO5034B). The system is shown in Fig. 3.



a) Experimental system



b) Experiment set-up

Fig. 3. Schematic illustration of experimental setup

Two pieces of $1000 \times 1000 \times 1.5 \text{ mm}^3$ aluminum plate with a single circular hole defect and double circular hole defects, respectively, are used in the experiment. The diameter of all the defects is 15 mm. Taking the lower left corner of aluminum plate as the origin, the coordinate of single circular hole defect is (550, 550), the coordinates of double circular hole defects are (550, 550) and (450, 500), and the unit is mm, as shown in Figs. 4(a) and 4(b).

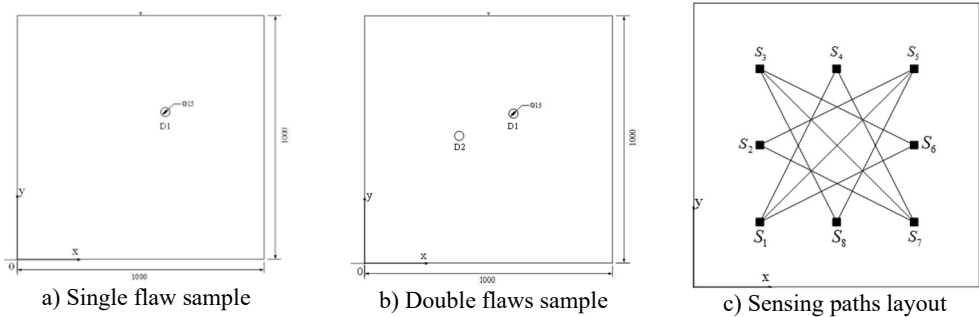


Fig. 4. Diagram of sample plates

At the same time, the strategy of limited detection region is used to physically avoid the influence of edge reflection. The detection region is divided into 400×400 grids with an area of $2.5 \times 2.5 \text{ mm}^2$ for each grid. The arrangement of eight sensors ($S_1 \sim S_8$) is shown in Fig. 4(c), with coordinates of (mm): $S_1(250,250)$, $S_2(500,250)$, $S_3(750,250)$, $S_4(500,750)$, $S_5(750,750)$, $S_6(750,500)$, $S_7(750,250)$, and $S_8(500,250)$. The sensor (Bat brand by Changzhou Ultrasonic Electronics Co. Ltd.) with an oblique probe with a dip angle of 30° is used in the experiment.

The attenuation of Lamb wave is inevitable in the transmission process. In order to reduce the attenuation on the reconstructed signal, a 5-cycle Hanning window-modulated sine wave is used as the excitation signal, and the frequency is 500 kHz.

The time reversal reconstruction signal of all the paths as shown in Fig. 4(c) is obtained. All signals are normalized and enveloped. The parameter m is set to 1/2, 1 and 2, and the optimum imaging combination is found by the experimental regulation of parameter β .

4.2. Data processing and experimental results

According to Eq. (6), the damage index along different sensing paths for single flaw is shown in Table 1, and for double flaws is shown in Table 2. Six sensing paths along which the amplitudes of reconstructed signals are the first six largest are selected for imaging by Eq. (11).

Table 1. Damage index of single flaw

Paths	$S_4 - S_7$	$S_1 - S_5$	$S_1 - S_6$	$S_3 - S_6$	$S_3 - S_7$
DI	0.1402	0.1336	0.1330	0.1287	0.1242
Paths	$S_3 - S_8$	$S_2 - S_5$	$S_1 - S_4$	$S_2 - S_7$	$S_5 - S_8$
DI	0.1212	0.1202	0.1189	0.1160	0.1010

Table 2. Damage index of double flaws

Paths	$S_4 - S_7$	$S_1 - S_5$	$S_3 - S_7$	$S_1 - S_4$	$S_3 - S_6$
DI	0.1695	0.1450	0.1429	0.1386	0.1322
Paths	$S_3 - S_8$	$S_1 - S_6$	$S_2 - S_7$	$S_2 - S_5$	$S_5 - S_8$
DI	0.1299	0.1228	0.1192	0.1167	0.1129

For single-flaw sample, with distribution drop rate parameter $m = 1/2, 1$ and 2 , the best shape parameter is calculated as $\beta = 0.974, 0.948$ and 0.895 , respectively. The corresponding images are shown in Figs. 5(a), 5(b) and 5(c), where the same black circle is the actual damage position, and the white circle is the damage location estimated by the proposed algorithm. It is seen that the

three sets of parameter combination of m and β show a good localization. The estimated damage position is (557.5, 562.5). In order to facilitate observation, A 90 % threshold value is used for Fig. 5(c) for better illustration, and the enlarged image is as shown in Fig. 5(d), where the black circle is the actual damage position, and white circle is the estimated damage position with the largest pixel value.

For double-flaw sample, the parameter combination of m and β are the same as for single-flaw. The images for double-flaw are shown in Fig. 6(a), 6(b) and 6(c). For $m = 1/2$ and $\beta = 0.974$, the estimated positions of the two defects are (560, 550) and (435, 512.5), respectively. For $m = 1$ and $\beta = 0.948$, the estimated position of damage 1 is (560, 550); there are two possible positions for damage 2, which are (435, 512.5) or (440, 505). For $m = 2$ and $\beta = 0.895$, the image of double flaws shows the best localization. The estimated positions of double flaws are (560, 550) and (440, 505), respectively. An enlarged image by applying a 90 % threshold value to Fig. 6(c) is shown in Fig. 6(d), where the black circle is the actual damage position, and the white circle is the estimated damage position with the largest pixel value.

The proposed method is compared with DAS imaging using the same setting. The images of DAS method are shown in Fig. 7(a) and 7(b).

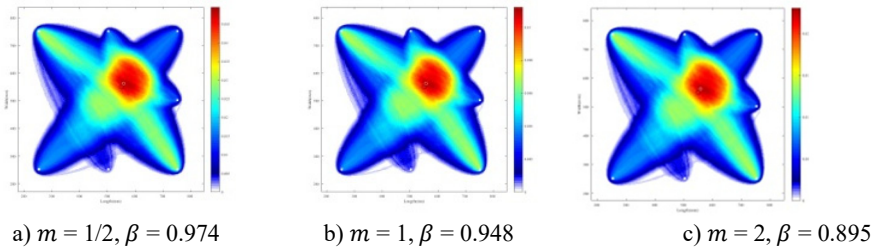


Fig. 5. Imaging results of single-flaw sample

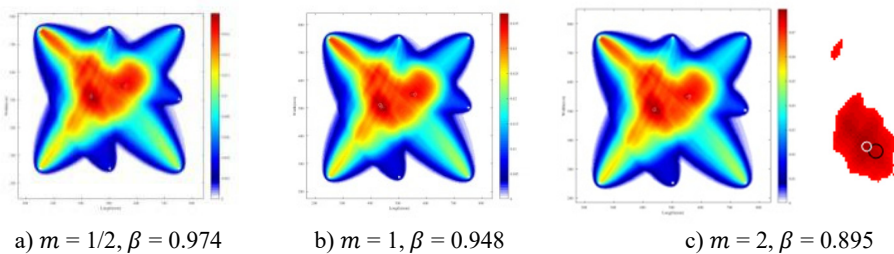


Fig. 6. Imaging results of double-flaw sample



Fig. 7. Imaging results of DAS

The errors of our proposed method and DAS method for single flaw and double flaws sample are listed in Table 3. Generally, our proposed method has a better damage localization than DAS method for both single-flaw and double flaw cases. For parameter combination of $m = 2$ and $\beta = 0.895$, our proposed method shows the most accurate damage position.

Table 3. Error of our proposed algorithm and DAS method

Algorithm	Single defect	Double defects	
	D1	D1	D2
Our proposed method ($m = 2, \beta = 0.895$)	14.58 mm	10.00 mm	11.18 mm
Delay-and-sum	19.04 mm	29.15 mm	40.31 mm

Qingwei Xia was responsible for proposal and writing of the ideas of the thesis. Yanyan Liu was responsible for guidance of the thought of the paper and the revision of the paper. Yu Lu constructed experimental instrument and the basis of imaging code. Shuhao Cao was responsible for discussion on experimental data acquisition and thinking. Hanfei Zhang was responsible for a cooperative study on the feasibility of the ideas of the thesis. Shiwei Ma was responsible for the guidance of the large-direction of the paper and the gatekeeper of the paper's innovation point.

5. Conclusions

Based on the delay-and-sum weighted damage index probability method, the proposed method improves the distribution function by introducing a distribution drop rate parameter m . The time reversal lamb wave is used to focus the scattering energy, and the damage index is obtained by calculating the reconstruction deviation from the original signal. Experimental result shows that the method has better location accuracy compared with the delay-and-sum weighted damage index probability method, which validates the efficiency of the proposed method, and the best parameter combination are distribution drop rate parameter $m = 2$ and the shape parameter $\beta = 0.895$. In future studies, more precise positioning can be achieved through more accurate group velocity measurements.

Acknowledgements

This work was supported by the National Natural Science Foundation of China with Grant Nos. 61671285.

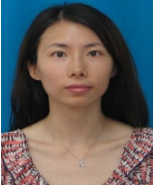
References

- [1] **Xu B., Giurgiutiu V.** Single mode tuning effects on lamb wave time reversal with piezoelectric wafer active sensors for structural health monitoring. *Journal of Nondestructive Evaluation*, Vol. 26, Issues 2-4, 2007, p. 123-134.
- [2] **Park H. W., Kim S. B., Sohn H.** Understanding a time reversal process in Lamb wave propagation. *Wave Motion*, Vol. 46, Issue 7, 2009, p. 451-467.
- [3] **Liqiang G., Weiguang Z., Yifeng L.** Research on hybrid techniques of time-reversal ellipse location and tomographic imaging of lamb wave. *Journal of Nanjing University (Natural Science)*, 2019.
- [4] **Ing R. K., Fink M.** Time-reversed Lamb waves. *IEEE Transactions on Ultrasonics, Ferroelectrics and Frequency, Control*, Vol. 45, Issue 4, 1998, p. 1032-1043.
- [5] **Wang C. H., Rose J. T., Chang F. K.** A synthetic time-reversal imaging method for structural health monitoring. *Smart Materials and Structures*, Vol. 13, Issue 2, 2004, p. 415-423.
- [6] **Wang D., Ye L., Lu Y., et al.** Probability of the presence of damage estimated from an active sensor network in a composite panel of multiple stiffeners. *Composites Science and Technology*, Vol. 69, Issue 13, 2009, p. 2054-2063.
- [7] **Hay T. R., Royer R. L., Gao H., et al.** A comparison of embedded sensor Lamb wave ultrasonic tomography approaches for material loss detection. *Smart Materials and Structures*, Vol. 15, Issue 4, 2006, p. 946.
- [8] **Su Z., Ye L.** Identification of damage using lamb waves: from fundamentals to applications. *Lecture Notes in Applied and Computational Mechanics*, Springer-Verlag London, 2009.
- [9] **Crawley E. F., De Luis J.** Use of piezoelectric actuators as elements of intelligent structures. *AIAA Journal*, Vol. 25, 1987, p. 1373-1385.
- [10] **Sohn H., Park H. W., Law K. H., et al.** Damage detection in composite plates by using an enhanced time reversal method. *Journal of Aerospace Engineering*, Vol. 20, Issue 3, 2007, p. 141-151.

- [11] **Syedpoor S. M., Montazer M.** A damage identification method for truss structures using a flexibility-based damage probability index and differential evolution algorithm. *Inverse Problems in Engineering*, Vol. 8, 2015, p. 1303-1322.



Qingwei Xia received the B.A. degree in Tianjin University of Technology, Tianjin, China in 2017, the M.S. degree in pattern recognition from Shanghai University, Shanghai, China in 2020. Now he is working at Shanghai Building Scientific Research Institute. His research interests include ultrasonic nondestructive testing and damage imaging.



Yanyan Liu received her Ph.D. degree in electrical and electronic engineering from Nanyang Technological University, Singapore, in 2011. Currently she is a Lecturer at Shanghai University, China. Her research interests include ultrasonic non-destructive evaluation and ultrasonic particle manipulation.



Yu Lu received the B.A. degree in Shanghai University, Shanghai, China in 2014. Now he is a Master candidate in Shanghai University. His research interests include ultrasonic nondestructive testing and damage imaging.



Shuhao Cao received the B.A. degree in Henan Polytechnic University, Tianjin, China in 2017, the M.S. degree in pattern recognition from Shanghai University, Shanghai, China in 2020. Now he is working at Shanghai Building Scientific Research Institute. His research interests include ultrasonic nondestructive testing and damage imaging.



Hanfei Zhang is a doctor candidate in Shanghai University. He was a assistant in Huaiyin Normal University from 2012 to 2015 and a Lecturer from 2016 to now. His research interests include ultrasonic nondestructive detecting, structural health monitoring, and signal processing.



Shiwei Ma received B.S. and M.S. degrees in electronics from Lanzhou University, Lanzhou, China in 1986 and 1991, respectively, and obtained Ph.D. degree in control theory and engineering from Shanghai University, Shanghai, China in 2000. From 2001 to 2003, he was a JST research fellow at the National Institute of Industrial Safety of Japan. From 2003 to 2008 he was an Associate Professor, and since 2008 to now he has been a Professor, in the Department of Automation in Shanghai University China. His research interests include ultrasonic nondestructive testing, structural health monitoring, and signal processing, pattern recognition and intelligent system.